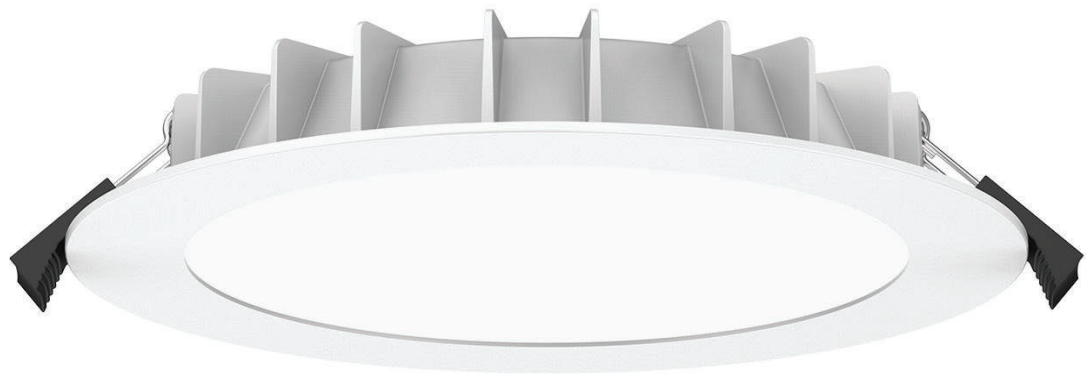




VOSE

RECESSED DOWN LIGHT



IP55 **PF 0.9** **CRI ≥80** **CE** **RoHS** 



VOSE is ELTON's Recessed downlight with super slim design, adopting high lumen SMD LED, PC diffuser with uniform light. ADC12 Aluminum profile provides excellent thermal dissipation.

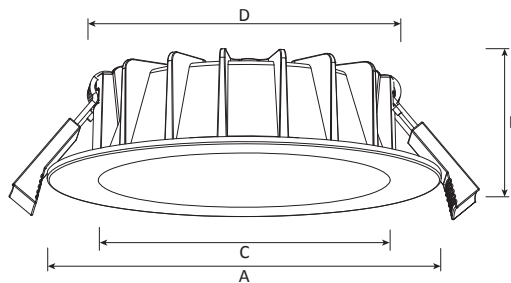
Features

- > Super slim design..
- > IP55 front waterproof .
- > External driver.

Application Areas

It is designed for general lighting applications in office, supermarket, shop, school, hotel, etc. It is also widely used for public areas, such as stairway, lobby, reception, corridors etc.

Dimensions



Code	Dimension(mm)				Cut out (mm)
	A	B	C	D	
110	110	30	81.5	87	Ø90-95
145	145	30	106	115	Ø120-130
190	190	30	143	152	Ø160-170
225	225	34	173	185	Ø200-210

Parameters

Power (W)	Size (ØxH)	Lumens (Non-DIM) (Lm)	Lumens (DIM) (Lm)
10	110x30	780-950	760-920
13	110x30	1100-1220	1080-1200
13	145x30	1120-1270	1100-1250
18	140x30	1670-1850	1640-1820
18	190x30	1660-1800	1620-1760
25	190x30	2300-2500	2250-2420
25	225x34	2280-2550	2250-2500
35	225x34	3300-3500	3300-3500
47	225x34	4600-4750	4550-4700

AC Input Range	200-240 V (50/60Hz)
LED	SMD
CRI	>80
Installation	Recessed
CCT Range	WW(3000K) NW(4000K) DW(5000K) CW(5700K)
Beam Angle	90°
Protection Class	Class II
Lifetime(Hr)	50,000h
Working Temp.	-20 to +45°C
Storage Temp.	-20 to +65°C
Ingress Protection	IP55
LED Driver	Built -out
Warranty	5 years

Ordering Info.

